



# DIGITAL IMPRESSION MATERIAL

Super-hydrophilic impression system  
Creating with digital consistency.

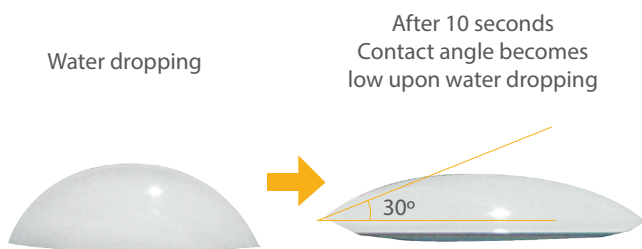


**zScan**™

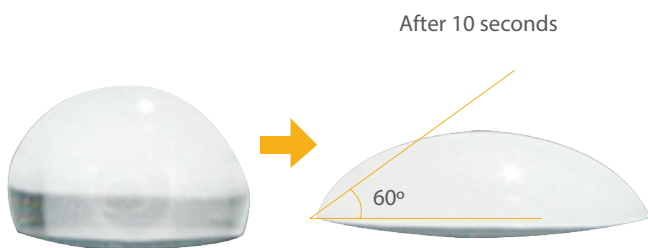
# zScan™

*zScan™ reaches deep into the intertooth spaces to give exact digital impressions of the preparation.*

## zScan™



## Competitor's Mean

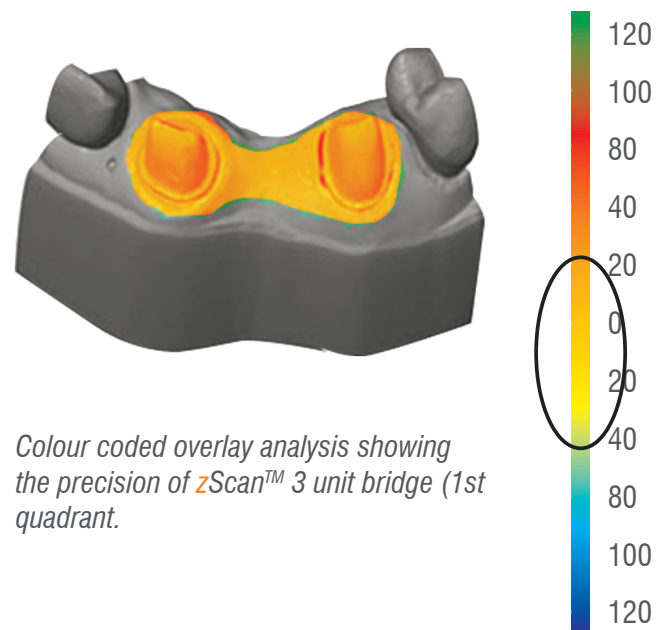
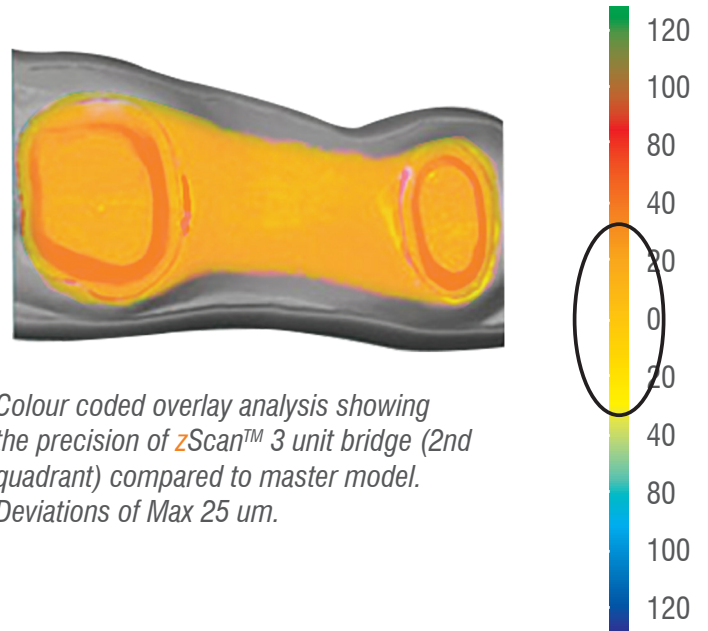


**zScan™** – Our super-hydrophilic digital impression system – shows a far lower contact angle in the water droplet contact angle test than the mean competitors angle.

Digital Precision and Consistency with

# zScan™

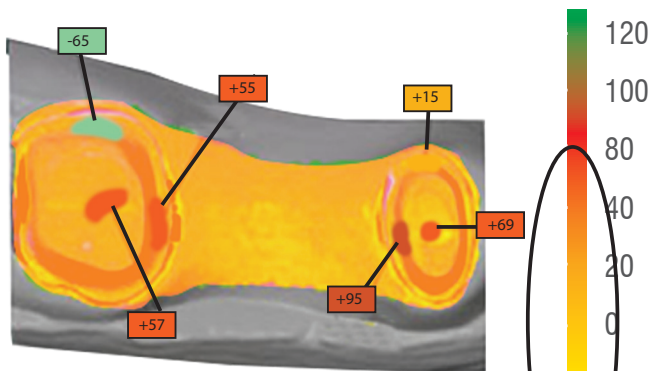
*zScan™ provides 5 x more accurate results than pouring of traditional models.*



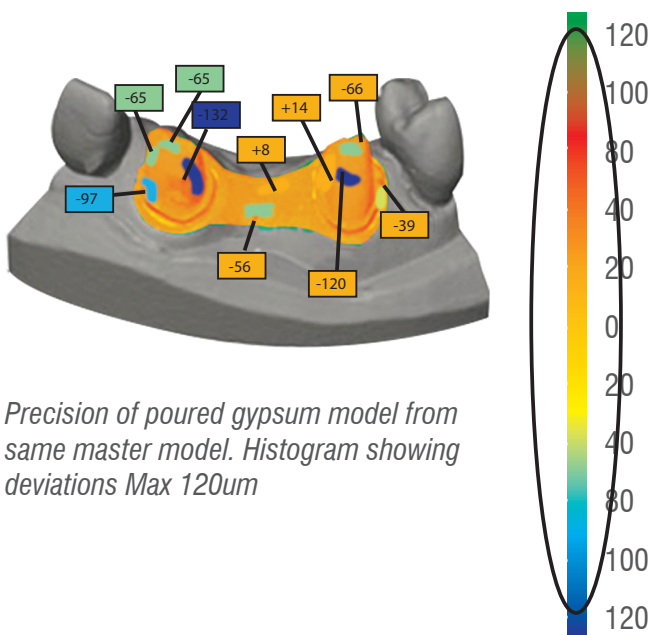
- Optical measurement of a model with typical tooth preparations. The model made out of Diemet model material representing the master model situation.
- Scan of a plaster model made with zScan™ by pouring

# zScan™

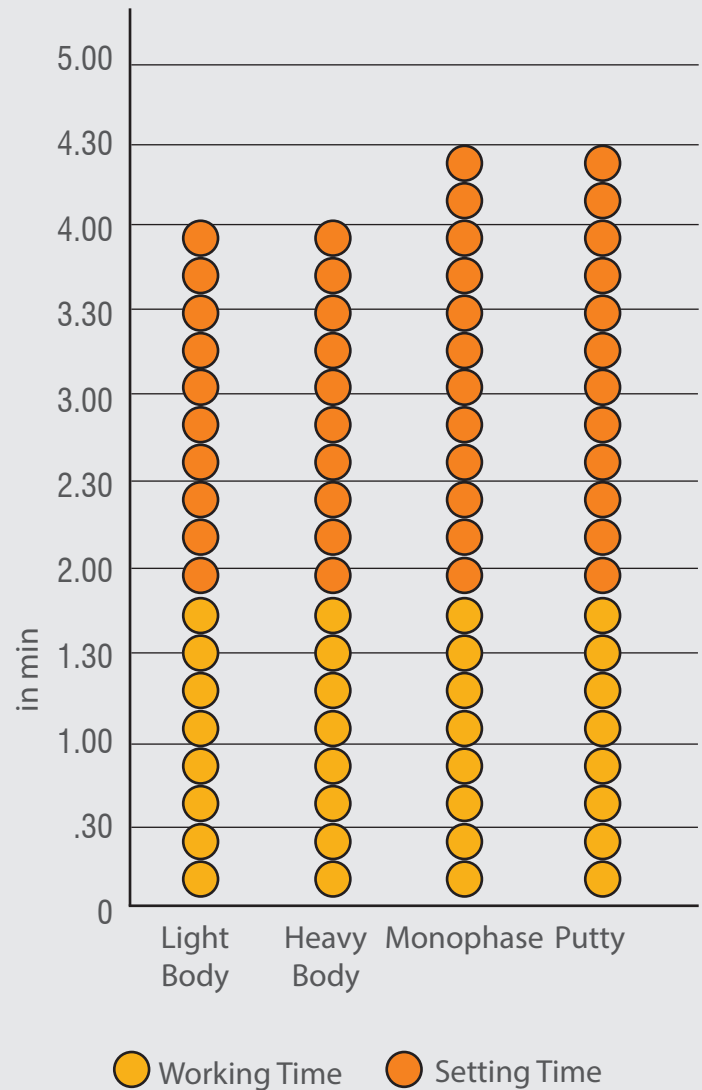
sets quickly in the mouth without any structural modification



Precision of poured gypsum model from same master model. Histogram showing deviations Max 80um, clear deformations at margins and isthmus.



Precision of poured gypsum model from same master model. Histogram showing deviations Max 120um



choose the materials and technique best suited for each individual case.

**COMPATIBLE WITH ALL IMPRESSION TECHNIQUES**

the above impression with gypsum (Co. Picodent, camtec-rock)

- 3D deviation analysis by overlay of the respective 3D data with the Diemet master model (blue- and red-coded deviations)

Implementing

# zScan™

into a treatment plan allows the dental practice an introduction into a complete and true digital workflow.



TGA

CE



Contact **DDN** for all enquiries

162 Pascoe Vale Rd, Moonee Ponds VICTORIA, Australia 3039

☎ 1300 550 956 | ✉ info@digitaldentalnetwork.com.au | 📱 digital dental network